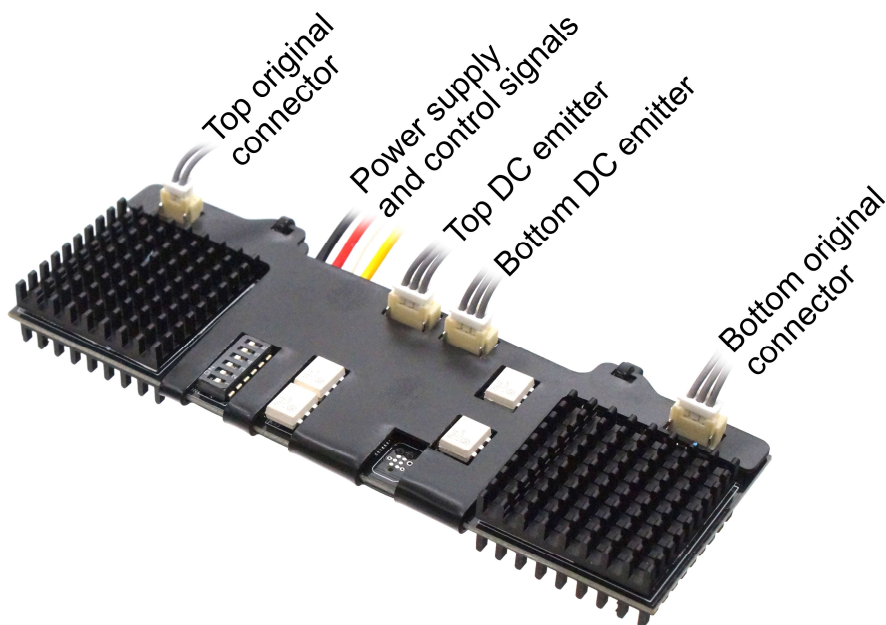
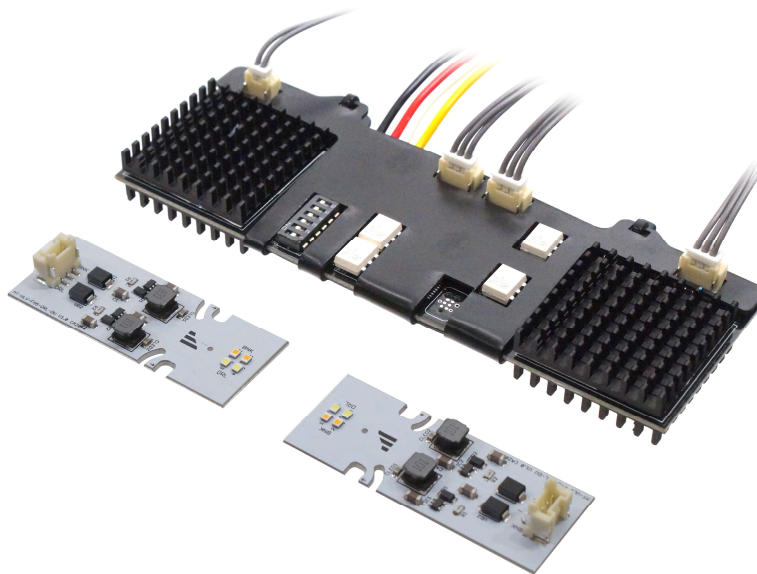


Kit that makes it possible to easily to change the colors on the DRL in the headlights on Volvo FH 2021+.

The controllers controls two emitters each. To avoid bulb check errors, the original connectors are connected to the controllers, that work as cheat / canbus resistors. The controller also uses this to read if the headlight is running high or low brightness, and also if the headlight is indicating.

The kit includes parts for both headlights

- 4 dual color emitters
- 8 cables (4 x male-female, 4 x female-female)
- 2 controllers
- Thermal paste for emitters

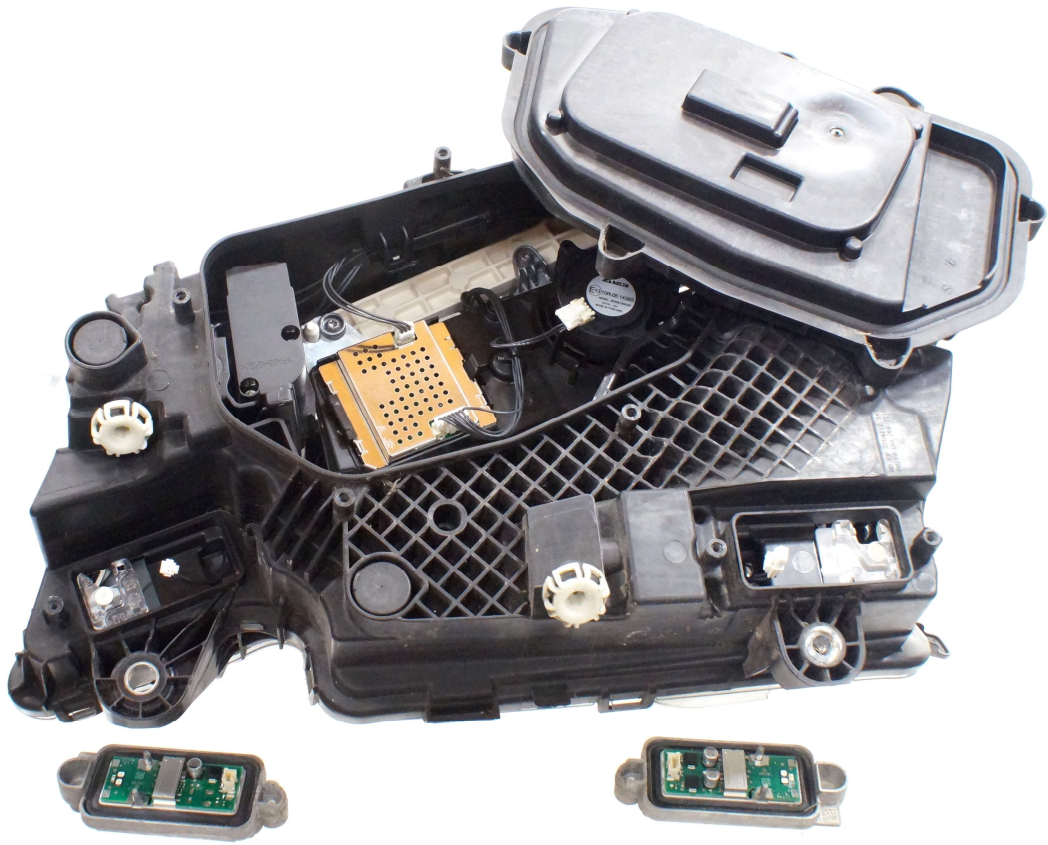


Mounting the dual color emitters and the controller for them, is done through the backside of the headlight. Notice that the connectors and cables that are used are some what fragile, and cannot handle hard pulls. You risk breaking the connectors, that will have to be fixed.



You do not have to remove the headlight completely, but you will have to tip the cabin all over.

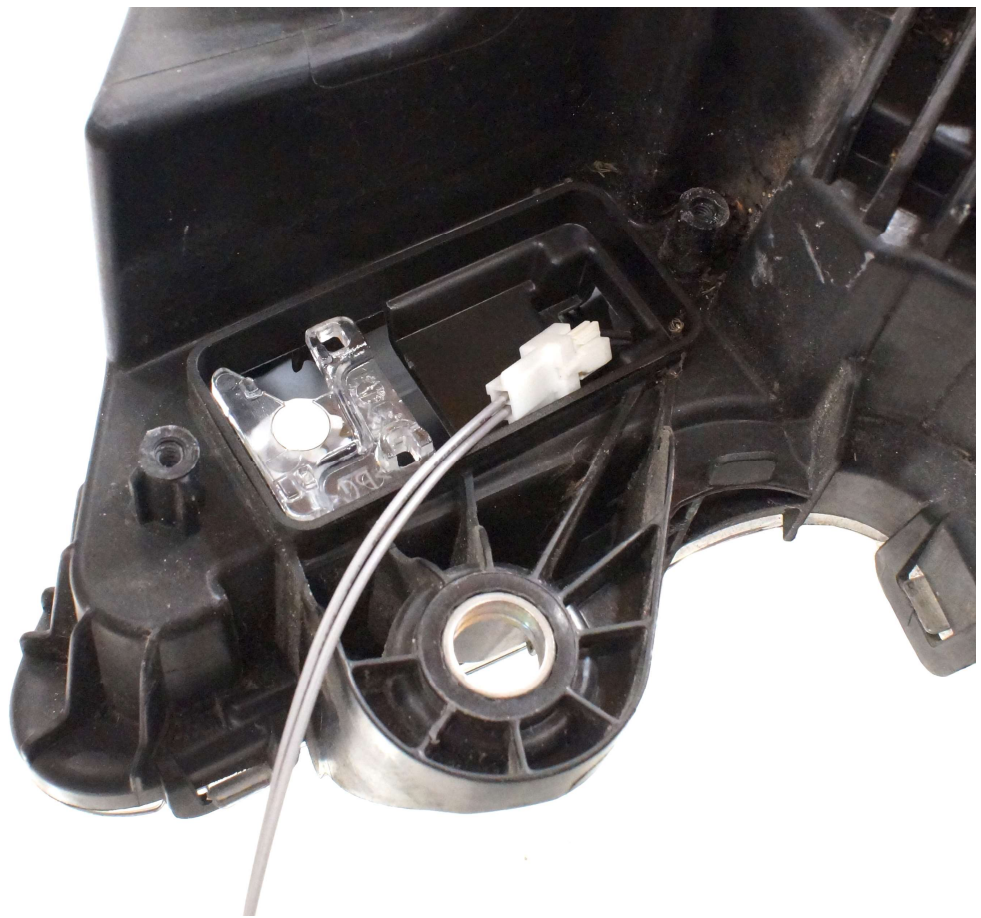
Remove the large plastic-shield and the two aluminium heat sinks, where the emitters are placed. Disconnect the connectors from the emitters.

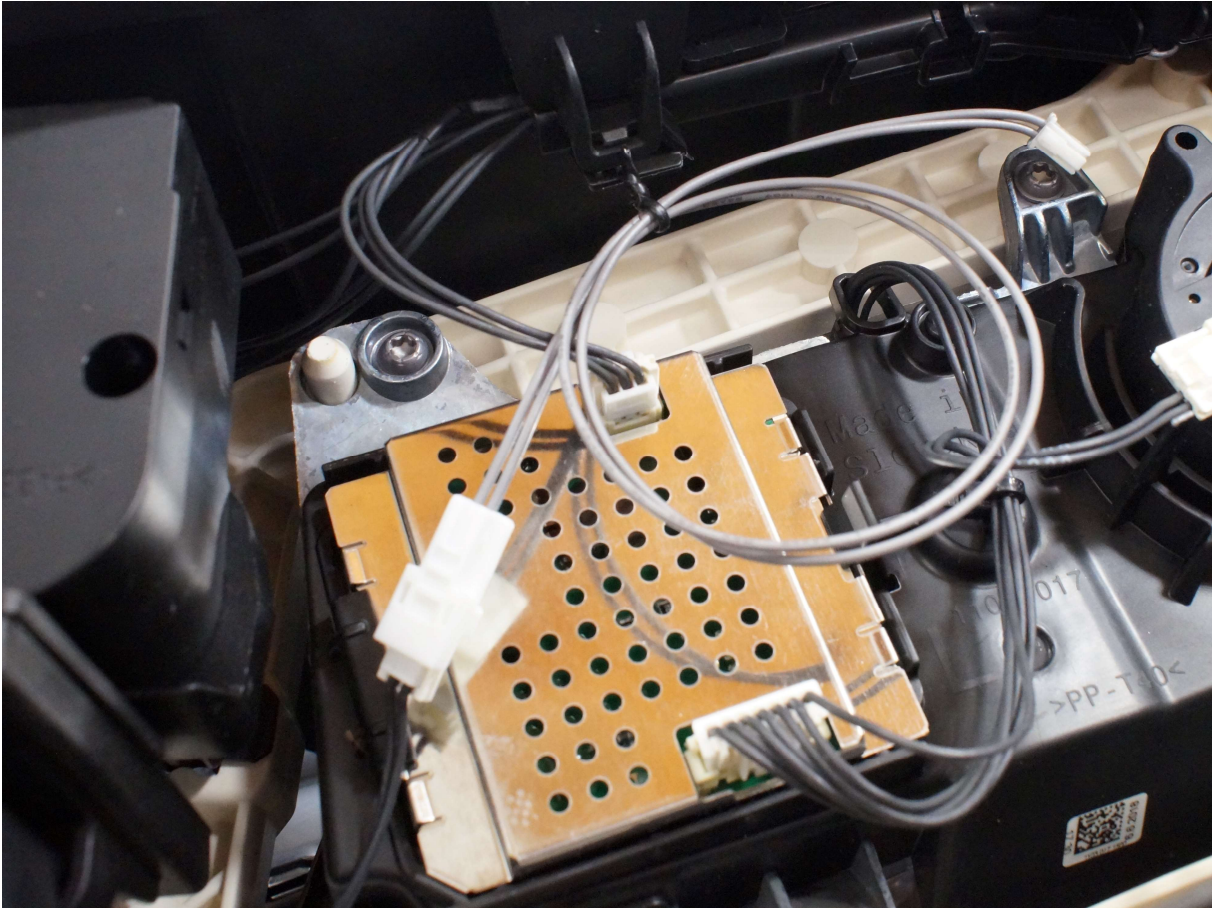


The original emitters are removed from the heatsinks, and the new are mounted. Remember thermal paste. Notice the arrows where you can bend the wings, so that they clamp on the taps of the heat sink.

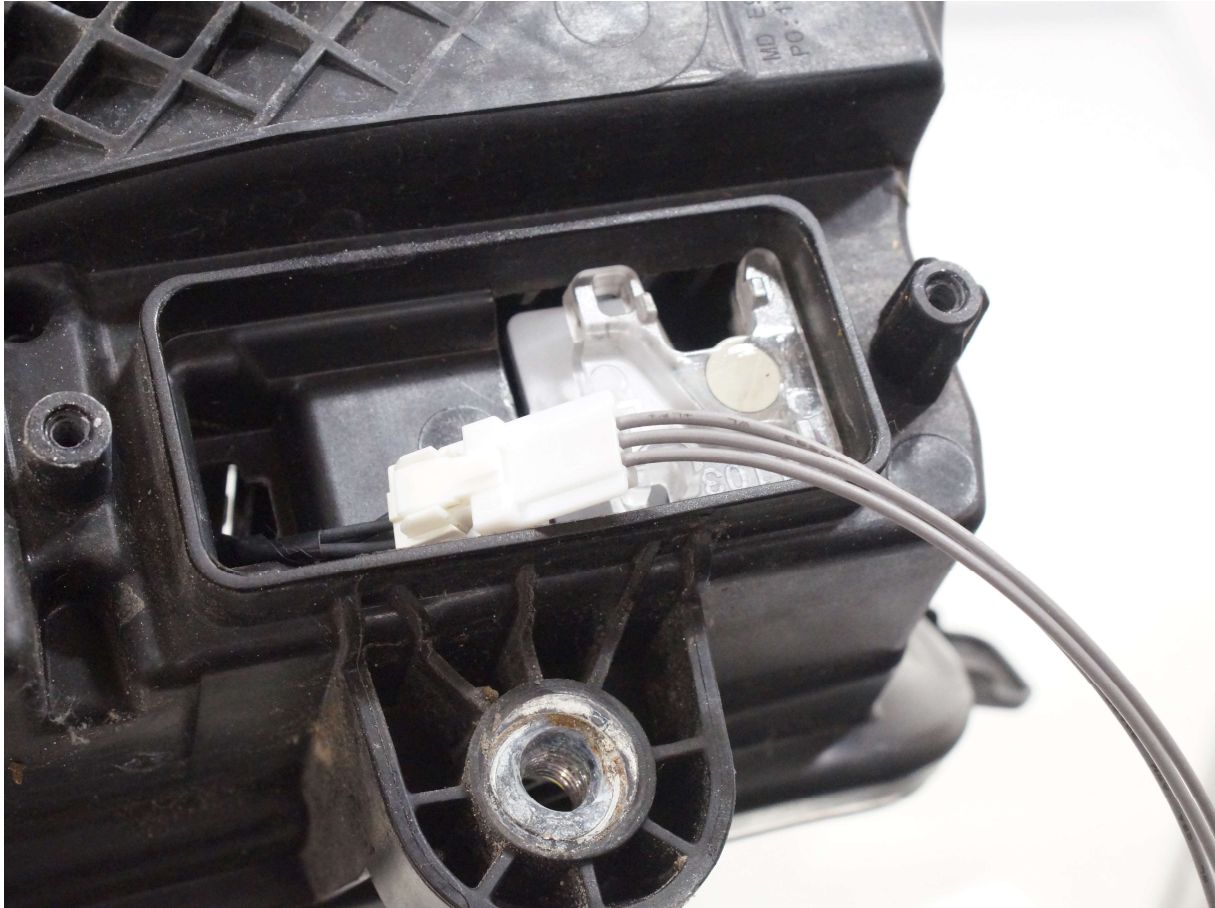


The large white male-connectors that are included, must be connected to the cables where the original emitters were connected. Notice one is 2-wire, the other is 3-wire. Cables and connectors must be fed through backwards in to the headlight, this is done the easiest by pushing the cables a bit in, and catch them on the backside with fingers or pliers.

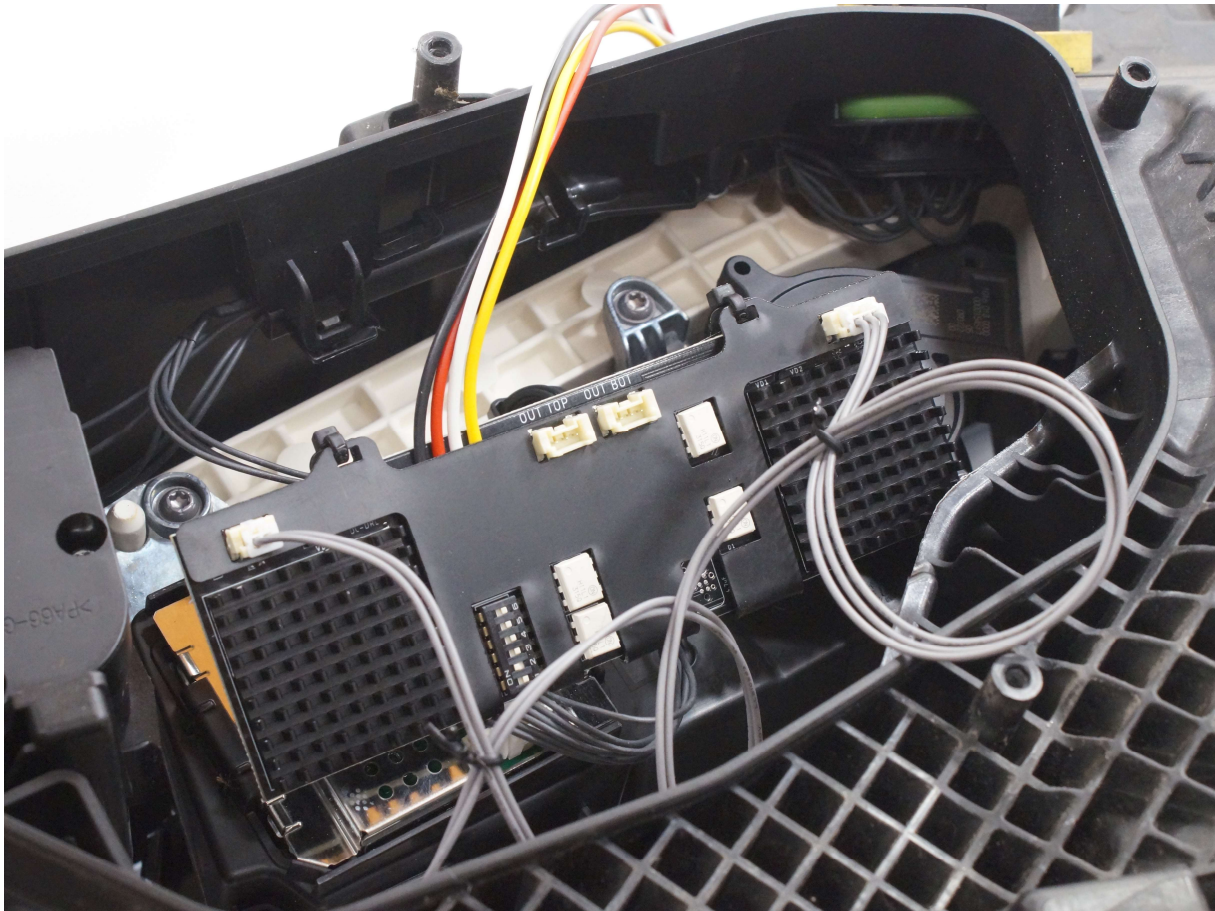




This is done on both sides

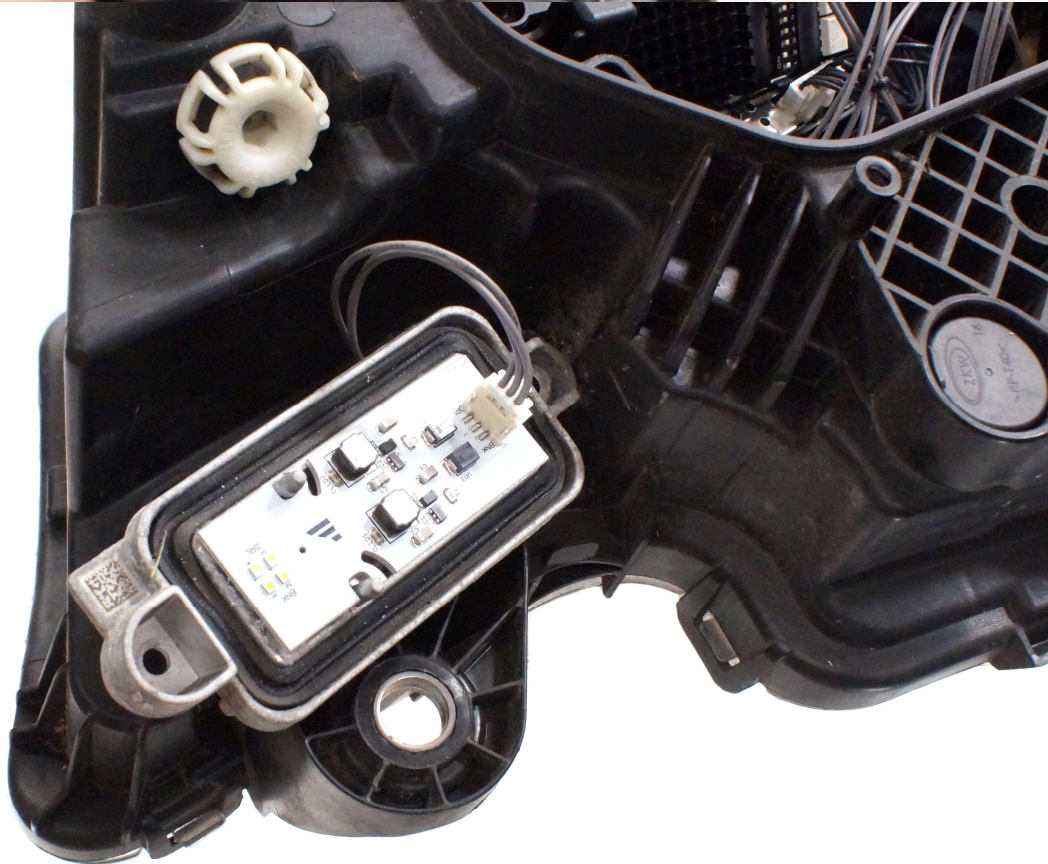


The two cables are connected to the outer connectors on the controller. Again notice that there is two different connectors, 2-wire and 3-wire.

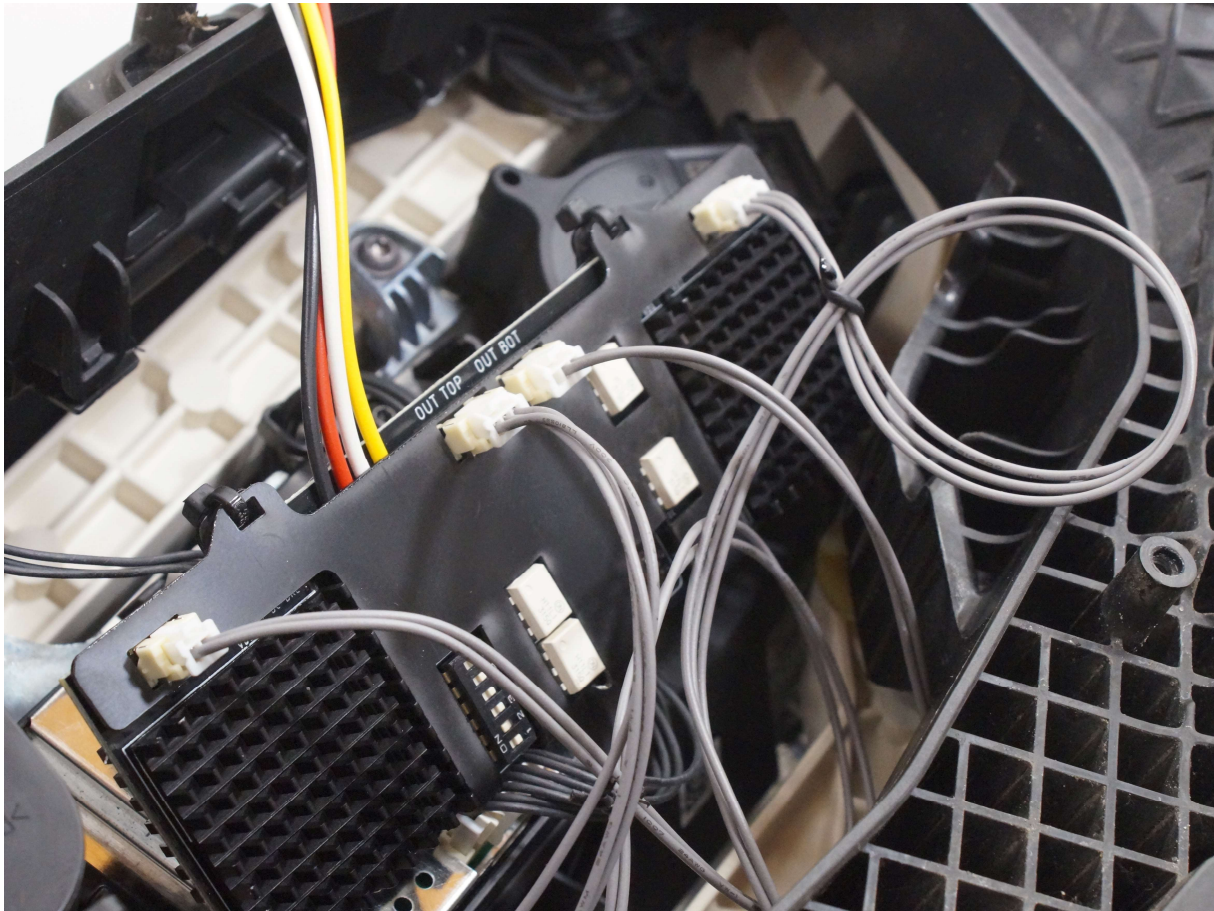


The two included female-female cables are connected to the dual color emitters, and the cables are fed through the holes in to the inside of the headlight.





These two cables are connected to the two middle connectors. Notice that they are marked as OUT TOP and OUT BOT.



The four colored wires on the controller is connected to the truck:

- Red: Plus
- Black: Minus
- Yellow: Strobe light
- White: Change DRL color

Make sure that the supply-cables that is put in to the headlight, is mounted in a waterproof fashion, to avoid moisture in the headlight.

This is a good point to test that everything works. Test DRL, both high and low brightness, indicators, color-change and strobe light.

There is 6-DIP switches, that makes it possible to adjust how the controller works:

- DIP 1 + DIP 2: Strobe mode (4 modes total)
- DIP 3: Split strobe (both lines blink at the same time or alternately)
- DIP 4: Dual color strobe, strobe both white and yellow)
- DIP 5: Warm white DRL instead of xenon white
- DIP 6: Indicator mode (bottom bar or both bars)

The controller is placed in the headlight, so that it does not get squeezed by the plastic shield. The lamp is closed and mounted on the truck again.

